



Sheerwater Close, Bury St. Edmunds, Suffolk, IP32 7HR

Rent - £1,295 PCM Deposit - £1,494

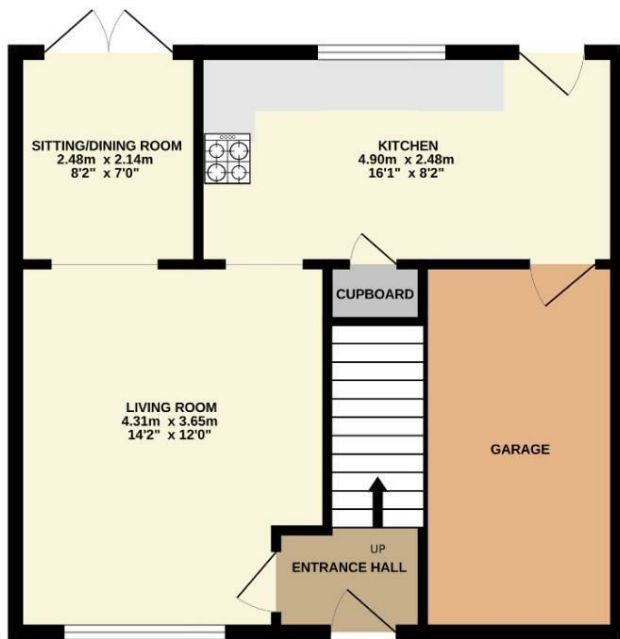
Shires Residential are pleased to offer this link detached house located on the popular Moreton Hall development. The accommodation is in good decorative order and in brief comprises an entrance hall, living room, dining room, kitchen, three bedrooms and a bathroom. The property further benefits from a garage, parking and gardens to front and rear. Sorry, no pets.

- MODERN LINK DETACHED HOUSE
- SPACIOUS KITCHEN
- BATHROOM WITH ELECTRIC SHOWER
- GAS CH, COUNCIL TAX BAND C
- MINIMUM TERM TENANCY OF TWELVE MONTHS
- LIVING ROOM WITH ARCH TO DINING ROOM
- 3 BEDROOMS (TWO DOUBLE, ONE SINGLE)
- GARAGE, DRIVEWAY AND GARDEN
- UNFURNISHED, EPC 69, C
- AVAILABLE LATE SEPTEMBER

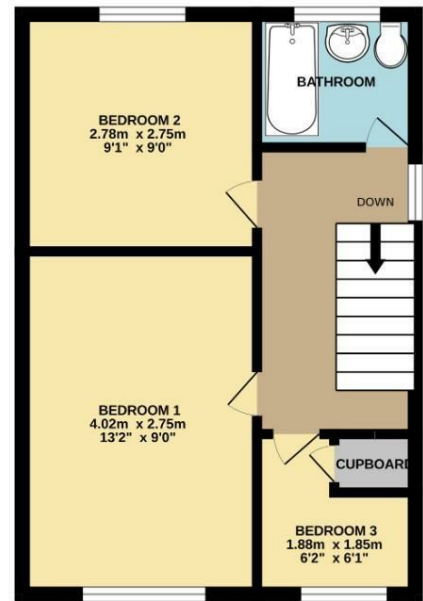


Council Tax Band: C - EPC Rating: C 69

GROUND FLOOR



1ST FLOOR



Whilst every attempt has been made to ensure the accuracy of the floorplan contained here, measurements of doors, windows, rooms and any other items are approximate and no responsibility is taken for any error, omission or mis-statement. This plan is for illustrative purposes only and should be used as such by any prospective purchaser. The services, systems and appliances shown have not been tested and no guarantee as to their operability or efficiency can be given.
Made with Metroplan ©2025

